



PMMA ART PANEL

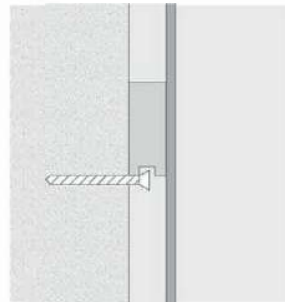
Art print on PMMA panel

Polymethyl methacrylate (PMMA) is a plastic material formed of methyl methacrylate polymers. It possesses behavioural characteristics similar to optical fibre in terms of quality and transparency. Its transparency exceeds the transparency of glass. According to its percentage of composition, it has properties of being unbreakable.

Thickness: 0.5cm (total gap from the wall with hanging frame: 3cm)

Curarto uses only PMMA produced in Italy, recycled, 100% recyclable and certified by the competent authorities.

Minimum print size: feet 1'7.6" x 1'7.6"
Maximum print size: feet 4'11.1" x 8'2.4"



2 cm 0,5 cm
2,5 cm





ALUMINIUM ART PANEL

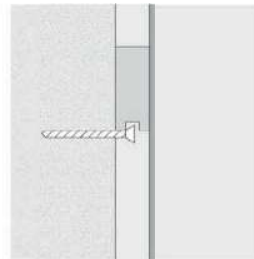
Aluminium with material covering

Artistic print on aluminium panel, with surface material cover applied by hand and non-toxic opaque protective finish

Thickness: 0.3cm (total gap from the wall with hanging frame: 2.3cm)

Panel made of aluminium alloy, with interposed a core of polyethylene, which is the simplest of synthetic polymers and the most present in nature. On the surface, our resistant, water-repellent, non-toxic, environmentally friendly and odor-free material covering is hand applied. Non-toxic glossy protective finish. Wall hardware included.

Minimum print size: feet 1'7.6" x 1'7.6"
Maximum print size: feet 6'6.7" x 13'1.4"



2 cm 0,3 cm
2,3 cm





ALUMINIUM CANVAS WITH TECNO FIBRE

Aluminium canvas with "Tecno Fibre" fabric covering

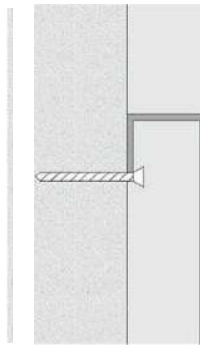
Artistic print on boxed aluminium panels. The exterior is manually covered with printed technical covering fibreglass fabric - Tecno Fibre.

Thickness: 4cm (total gap from the wall with direct hanging: 4cm)

Vintage effect opaque protective finish. Wall hardware included. Colour is resistant to sun exposure and does not fade or yellow.

There might be a slight difference between the colours from the catalogue and the finished products.

Minimum print size: feet 1'7.6" x 1'7.6"
Maximum print size: feet 5'10.8" x 12'7.5"



4 cm





SOUND ABSORBING ART PANEL WITH ACOUSTIC FIBRE

Sound absorbing with acoustic polyethylene and polyester with art print

Artistic print on sound absorbent panel with perimeter and internal structure in solid wood, with internal covering in acoustic polyethylene "Strata Isolant". Surface, perimeter and back coating in "Acoustic Fibre" acoustic polyester made with artistic print.

Thickness: 5cm (total distance from the wall with direct fastening: 6cm)

Minimum print size: feet 17.6" x 17.6"

Maximum print size: feet 98" x 98"

DISTINCTIVE FEATURE-BENEFITS

07 Fire resistant B-s1-d0;

02 Reaction to fire classification according to DIN EN 13501-1;

03 Fire resistance with glue on walls, partitions or ceilings, mainly for decorative purposes
Reference standard: EN 15102:2007 / A1:2011);

04 Sound absorption class: Type B
Reference legislation: EN ISO 11654

05 Determination of the sound absorption coefficient: 0.85;

06 Measurement of area of absorption in a reverberation room.
Acoustic equivalent "Aobj"
Reference legislation: UNI EN ISO 354:2003;

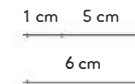
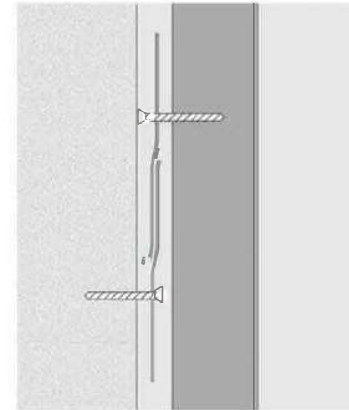
07 Keeps the colour intact over time

TEST RESULTS

Calculation Procedure

In accordance with ISO 20189:2018, the sound absorption coefficient is:

- Weighted sound absorption coefficient 'aw' (value of the reference curve at 500 Hz): 0,55
- Shape Indicator: M,H
- Sound absorption class: D





SOUND ABSORBING ART PANEL WITH GLASS WOOL

"Solo-rectangle ecophon" panel in high density glass wool with a totally porous structure of 40mm thickness with eco-digital print

Sound-absorbing panel, composed of a high-density glass wool core. Externally it is encapsulated in a high-performance, white coloured smoothed film (Acoustic Paint) with eco-digital printing and digital art print. The frame finish is in solid wood with matte open pore varnish in White Ral 9070 or Black Ral 9005

Thickness: 4cm (total distance from wall with direct fastening: 5.8cm).

Possibility on request to print the glass wool panel on both sides, with the option of changing the image of the picture

Minimum print size: feet 1'8.6" x 1'8.6"

Maximum print size: feet 4'0.2" x 9'7.2"

Certifications

- Fire resistance EN 13501-1 Class A2 - s1 - d0 ;
- Reactivity: no dangerous reactions are known if used under normal conditions ;
- Specific certifications for sectors: construction-industry-rail and tram-automotive-electronics-nautica;
- Maintenance of the acoustic and mechanical properties over time;
- Resistance to water and humidity
Reference standard: UNI EN 12088 ;
- Absence of bacterial proliferation
Reference standard: ASTM C 1333 ;
- Absence of bacterial proliferation
Reference standard: ASTM C 1333 ;
- EUCB certified glass wool ;
- Non-toxic, non-irritating and non-sensitizing.

DISTINCTIVE FEATURES-BENEFITS

- 01 Glass wool panel thickness 40mm;
- 02 Density: 25kg/m³ - Ref. ASTM D3575-08
Suffix W / ISO 845: 2006 ;
- 03 Maximum acoustic properties of sound absorption ($\alpha_w = 1.00$);
- 04 Resistant to compression (Kpa) - Ref. ASTM
03575-08 Suffix D / 7214:2007;
- 05 Boiling point not applicable;
- 06 Thermal conductivity (W/ mK) - Ref. ASTM
03575-08 Suffix V / ISO 8301;
- 07 Thermal stability - Ref. ASTM D3575-08 Suffix S/ISO 2796 ;
- 08 Certified according to the increasingly demanding standards of reaction to fire, smoke, bacterial proliferation ;
- 09 Partially open calibrated cell structure ;
- 10 Patented double perforation process ;
- 11 Self-supporting, flexible and easy to work with and shape ;
- 12 Applicable on sight and easy to apply with reduced mechanical fixings ;
- 13 Washable, it does not require a protective moisture coating;
- 14 Low weight.

